




Impactful Benefits of Logistics Financial Planner



Efficiency Boost with AI-based automation.



Financial Accuracy with reactive payment processing and thorough discrepancy management.



Operational Harmony between operations and accounting teams.

Logistics Visibility Hub


With Logistics Visibility Hub, overcome challenges like:

- Missed Opportunities
- Poor Decision-Making
- Operational Bottlenecks


Key Metrics



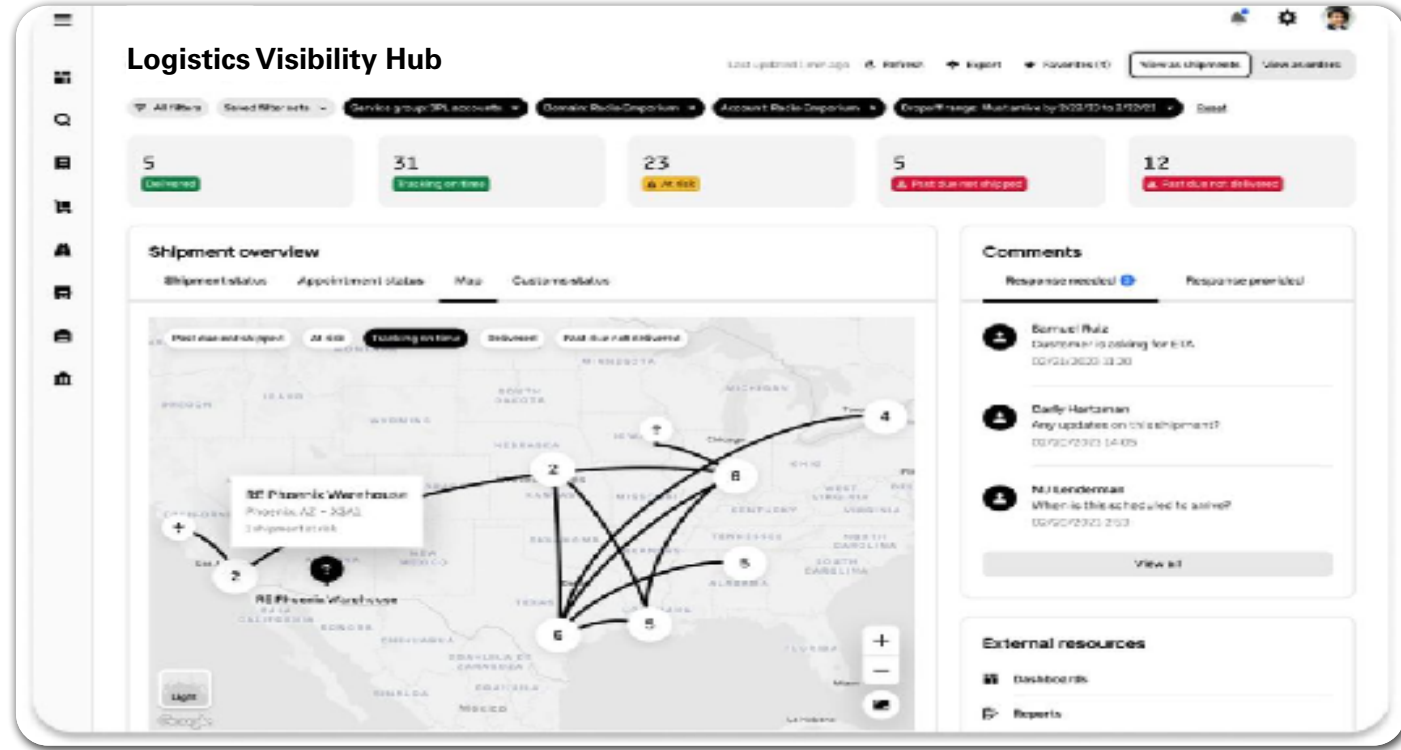
2.1M
Proactive Risk Notifications



243K
Logins Per Week



40+
Largest Ocean Carriers Tracked



Flagship Capabilities of the Logistics Visibility Hub

End-to-End Visibility

- Single pane of glass for overseeing shipping activities
- Integration of data from carriers, suppliers, and partners

Shipment Management

- Ability to bookmark specific shipments for focused attention
- Data export functionality for reporting purposes

Collaboration & Communication

- Real-time communication between all parties
- Facilitates coordination among suppliers, carriers, and partners

Search and Predictions

- Simplifies searches for shipments and related information
- Provides accurate estimated time of arrival (ETA) predictions

Customer-Focused Advantages

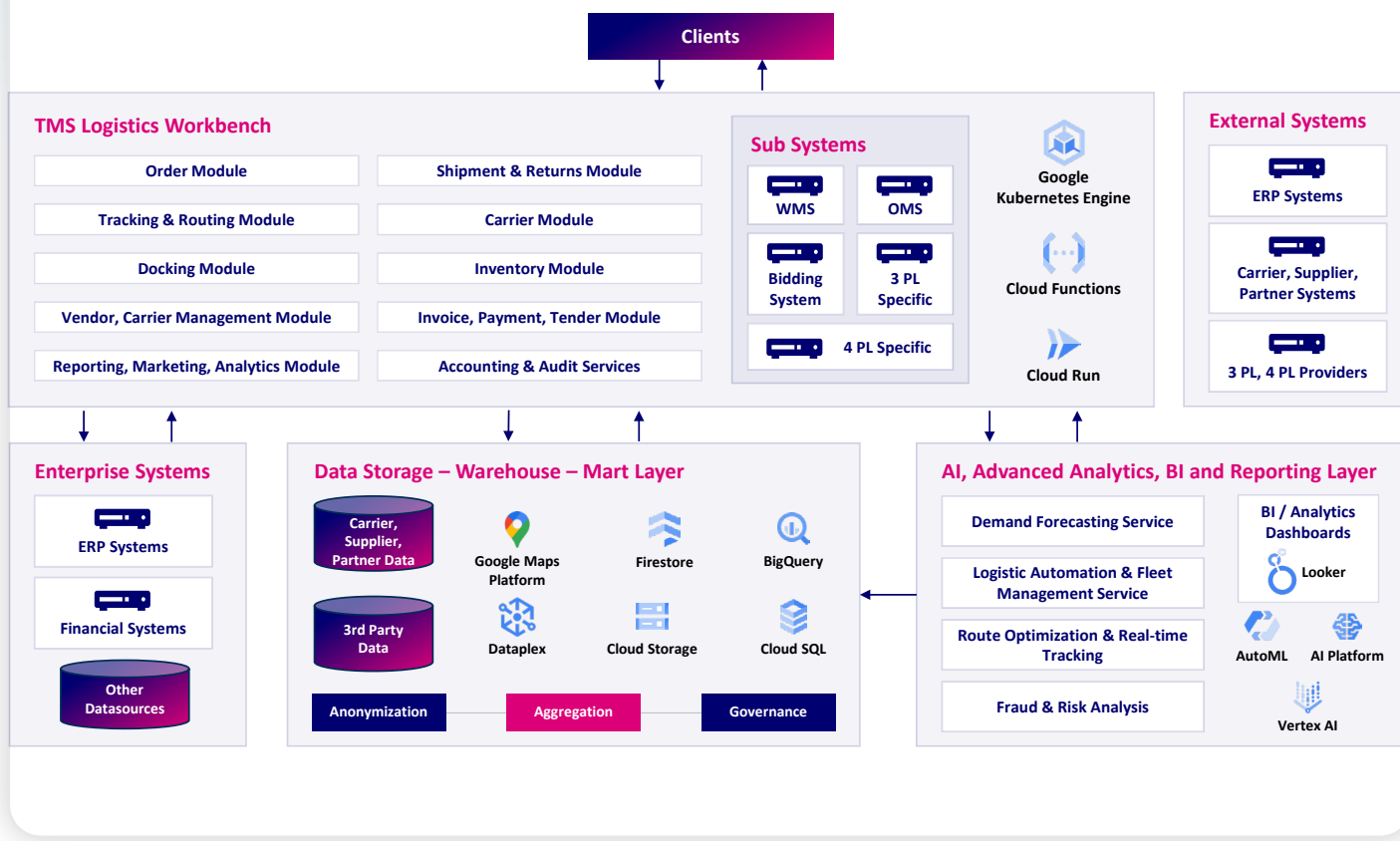
Enhanced Customer Experience: Ensure **timely deliveries**.

Competitive Edge: Offer **superior visibility** and service levels.

New Revenue Streams for 3PLs: Leverage enhanced **visibility services**.

Improved Supply Chain Performance: Operate with a **single version** of truth.

Logistics Resource Planner Referential Architecture on Google Cloud Platform (GCP)



Our solution on GCP integrates key services for optimized logistics operations: real-time data processing with Pub/Sub, secure storage via Cloud SQL & BigQuery, scalable deployment on GKE, event-driven automation with Cloud Functions, advanced ML through Vertex AI & BigQuery ML, insightful visualization with Looker, and route optimization using Google Maps Platform. This architecture ensures real-time tracking, automated scheduling, and cost-efficient, timely deliveries.



Empowering The Future of Innovative, Seamless Global Logistics with Emerging Technologies

Logistics Resource Planner

At the heart of the logistics and transportation evolution is Innova's Next-Gen Logistics Resource Planner—a pivotal tool in modern supply chain management, engineered to redefine how industries operate in an increasingly complex world.



www.innovasolutions.com

About Innova Solutions

Innova Solutions is a trusted global technology partner specializing in transformative digital solutions for complex, real-world challenges. With teams across North America, Europe, & APAC, we blend exceptional talent and advanced technologies to enhance operations and drive sustainable revenue growth for our customers. Partnering with technology leaders who share our passion for bold innovation, we deliver cutting-edge solutions such as generative AI, data & analytics, cloud computing, digital product engineering, and cybersecurity. Since 1998, we've proudly supported leading organizations across critical industries—including Banking & Financial Services, Healthcare, Insurance, and Communications—with sector-specific solutions to tackle evolving business needs. To learn more about us, visit www.innovasolutions.com.

To know more about our Logistics offerings, contact us at info@innovasolutions.com

Contact Us



With Next-Gen Logistics Resource Planner, overcome tangible market challenges like:

- Inefficiencies caused by manual processes and siloed data
- Rising costs due to unoptimized carrier selection and limited procurement options
- Lack of real-time tracking reduces agility
- Data overload delaying extraction of actionable insights

Key Pillars of the Logistics Resource Planner

Focus on five key pillars designed to drive logistics excellence:

1. **Execution:** Seamless multi-modal shipment execution with end-to-end visibility on a single platform.
2. **Procurement:** Simplified setup, proactive insights, and optimized carrier selection.
3. **Visibility:** Intuitive experiences supporting all major modes with rapid additions.
4. **Payments:** Automated payables/receivables with forecasting.
5. **Insights:** AI & analytics delivering actionable intelligence, recommendations, and real-time learning.

Proven Impact by the Numbers



Unlocking Efficiency and Success: Strategic Capabilities of Logistics Resource Planner

Data Creation

- Shipment order data validation
- Secure EDI transmission over various channels including SFTP, AS2, and HTTPS
- Interfaces for major ERP systems

Optimization

- Optimal carrier assignment
- Mode selection
- Shipment route optimization
- Manual route building
- Cross-client collaboration and consolidation
- Cross-dock and transloading functionality

Shipment Planning and Execution

- Routing guide assignment
- 1. Tender via EDI or Carrier Web Portal
- 2. Automated Tender
- 3. EDI/API Carrier Integration
- 4. Auction Tools (FAM)
- Auto rating
- Appointment scheduling
- Tender functions

Shipment Management

- Pro-active notification
- Service Prediction
- Automated workflows

Shipment Monitoring

- Shipment tracking via real-time visibility

Audit and Payment

- Carrier freight invoice audit and payment
- Carrier can upload invoices and all documentation through carrier portal or EDI

Business Intelligence

- Standard shipment operation reports
- Direct access to Transplace shipment data
- warehouse and Tableau

Real-Time Operations Management

- Automated Dock Planner
- Logistics Visibility Hub
- Inventory Management
- Document Management
- Automated Alerts and Notifications

Efficiency and Cost Optimization

- Route Optimization
- Load Planning
- Reporting and Analytics

Visibility and Transparency

- Shipment Visibility
- Customer Portal

Relationship and Order Management

- Carrier Management
- Order Management

Financial Accuracy and Compliance

- Freight Audit and Payment
- Compliance Management

Innova's Value Proposition

- Simplified onboarding and configuration
- End-to-end intuitive self-service UX
- Data-driven predictive and proactive experiences and insights
- Support for all key modes & adding new modes/ functionalities fast
- Simplified integration with IT ecosystem such as ERP, CRM, etc.
- Unlock growth of logistics AI

What Sets Our Logistics Resource Planner Apart?

Automated Dock Planner

With Automated Dock Planner, overcome inefficiencies like:

- Unpredictable transport arrival times that lead to delays and frustrated drivers.
- Overcrowding docks slowing down unloading/loading, incurring detention fees.
- Manual tracking of dock activity.
- Unoptimized resource allocation.

Key Metrics



Automated Dock Planner Capabilities: Operational Excellence at Every Touchpoint

- Automated Scheduling:** Advanced algorithms to optimize Automated Dock Planner, reducing manual effort and maximizing resource utilization.
- 24/7 Appointment Booking:** Carriers with round-the-clock flexibility to book appointments, accommodating dynamic schedules.
- Seamless Integration:** Easy integration with TMS, WMS, YMS, and ERP systems, providing comprehensive operational visibility across platforms.
- Tagging:** Data-driven monitoring, notification, and analysis through universal and customizable tags for enhanced accountability.
- Automated Notifications:** Real-time notifications to carriers and warehouse teams for appointment changes, reschedules, and status updates, promoting proactive communication.
- Real-time Adaptability:** Management of exceptions as they occur, ensuring smooth operations and preventing costly delays.
- Complete Visibility:** Comprehensive visibility into inbound and outbound schedules, empowering informed decision-making.
- Scheduling Rules Engine:** Customization of scheduling rules to align with unique warehouse operations, accommodating factors like lead times, approvals, and appointment limits.
- Appointment Audit Log:** Transparent record of appointment updates, including scheduling, status, and detail changes, for improved visibility and accountability.
- User Roles:** Facilitating effective access control by assigning appropriate locations and permission levels to users, ensuring secure and controlled access based on roles.

Automated Dock Planner Screen

Dock group	Line	Appt date	Start time	End time	Appt ID	ME	Pickup date	Pickup time	Ref #	Secondary Ref	SCAC	Status	Shipped to	Receiver	Equipment	Trailer #	Handling units	Weight	Load/Unload %
Warehouse Loading	✓	2023-09-26	12:00	13:00	10639495	875462229	2023-09-26	12:00	--	--	HURT - JB HUNT TRANSPORT, INC	Tender Accept	WEBSTER, TX	RECVR-ABC SUPPLY	DRY VAN	2342343			Line Load ✓
Warehouse Loading	✓	2023-09-26	08:00	09:00	10640346	875464967	2023-09-26	08:00	--	--	GARD - USER-FREIGHT GA	Tender Accept	WEBSTER, TX	RECVR-ABC SUPPLY	DRY VAN	2342343			Line Load ✓
Warehouse Loading	✓	2023-09-26	10:00	11:00	10640350	875532617	2023-09-26	10:00	--	--	GARD - USER-FREIGHT GA	Tender Accept	WEBSTER, TX	RECVR-ABC SUPPLY	DRY VAN	2342343			Line Load ✓
Warehouse Loading	✓	2023-09-26	12:00	14:00	10641027	875532261	2023-09-26	12:00	--	--	GARD - USER-FREIGHT GA	Tender Accept	WEBSTER, TX	RECVR-ABC SUPPLY	DRY VAN	2342343			Line Load ✓
Warehouse Loading	✓	2023-09-26	14:00	15:00	10642972	875532321	2023-09-26	14:00	--	--	GARD - USER-FREIGHT GA	Tender Accept	WEBSTER, TX	RECVR-ABC SUPPLY	DRY VAN	2342343			Line Load ✓
Warehouse Loading	✓	2023-09-26	16:00	17:00	10644109	875532028	2023-09-26	16:00	--	--	USR - US XPRESS, INC	Tender Accept	WEBSTER, TX	RECVR-ABC SUPPLY	DRY VAN	2342343			Line Load ✓

The Advantage With Automated Dock Planner



Logistics Financial Planner

With Logistics Financial Planner, overcome market challenges like:

- Customer Retention and Acquisition
- Adapting to Change
- Integration with third-party or legacy Transport Management Solutions

Logistics Financial Planner

- Invoice Creation Service**
- Invoice Audit Service**
- On Demand Invoicing**
- Bill to Admin Config Service**
- 190 days ME Locking Service**
- Invoice Print Service**

Key Features

- AI-Driven Automation:** Utilize API and intelligent OCR for FAP audits, ensuring streamlined carrier payment processes and boosting operational efficiency.
- Automated Invoice Creation:** Ensure accurate invoicing from initial load rating to execution, managing additional charges like fuel surcharges and third-party fees effortlessly.
- User-Friendly Interface:** Enjoy an enhanced user interface designed for seamless end-to-end AR and AP workflows.
- Freight Spend Visibility:** Gain comprehensive insights into freight spending and forecasting at both managerial and organizational levels.
- Streamlined Accessorial Management:** Manage additional charges efficiently with carrier self-service options for rate discrepancies.
- Comprehensive Dashboard:** Track all Work in Progress invoices in real-time.
- Seamless Integration:** Connect seamlessly with Oracle Cloud ERP, ensuring smooth data flow for accurate billing and payment processing for shippers and carriers.
- Dual Invoices:** Generate separate AP and AR invoices per shipment for clear and organized financial documentation.
- Flexible Payment Methods:** Adapt to various business models with payment processes that can be customized based on contract terms, whether invoices are transmitted directly to customers or handled internally.
- Customizable Billing Cycles:** Meet customer preferences with flexible billing options, whether by individual order, weekly, or monthly cycles.